



A1 Metal Mesh Screens

WELDED & WOVEN MESH



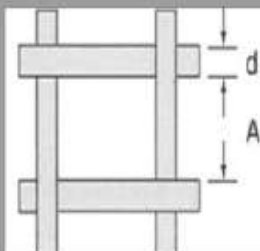
CHOOSING THE RIGHT MESH

There are many factors to consider when choosing the right mesh:

- Aperture size
- Wire diameter
- Materials
- Roll length
- International standards

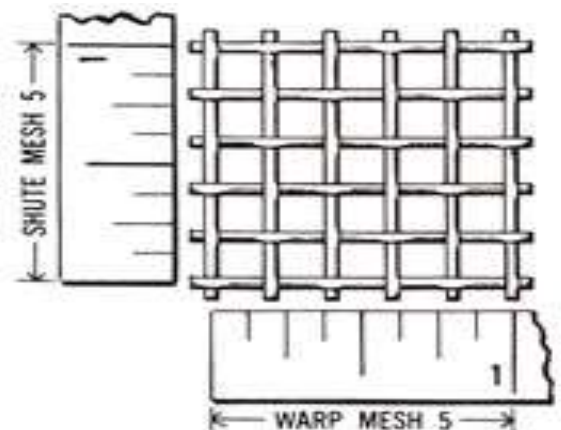
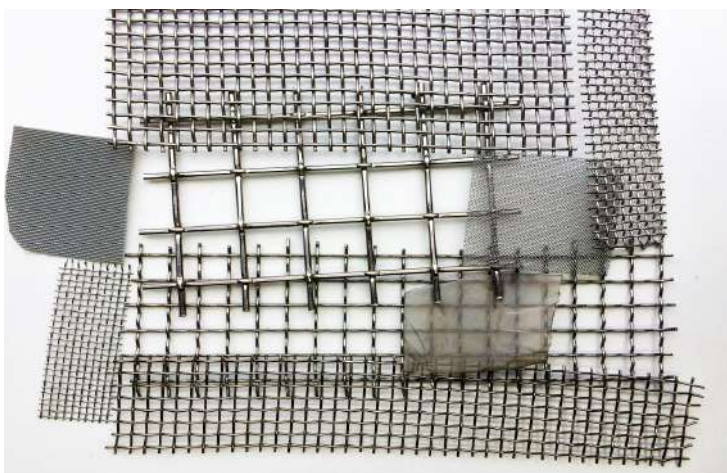
Aperture $A = \frac{25.4}{M} - d$

Open area $\epsilon = \left(\frac{A}{A+d}\right)^2 \times 100$



A : Aperture (mm)
M : Mesh
d : Wire diameter (mm)
E : Open area (%)

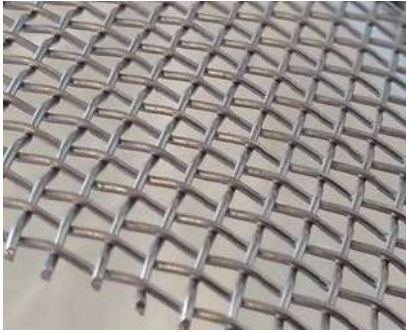
PARAMETER	THINNER WIRE	THICKER WIRE
SCREENING EFFICIENCY	↑	↓
FLOW	↑	↓
OPEN AREA	↑	↓
NUMBER OF APERTURES	↑	↓
ABRASION RESISTANCE	↓	↑
STRENGTH	↓	↑
WEIGHT	↓	↑





Weave Profiles

Plain Weave/ Square Mesh



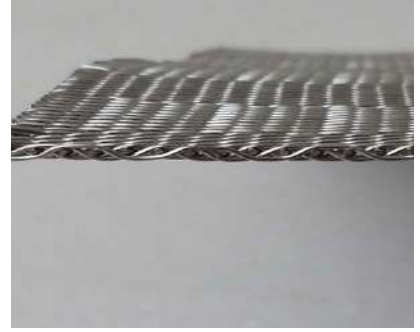
Extremely exact mesh sizes are a characteristic of the plain weave/ square mesh. The weft wires wrap over and under the warp wires constantly in an alternating pattern.

Plain Dutch Weave



In this weave type, the warp wires are stronger than the weft wires. The weft wires are positioned closely to each other to make the "Zero-Mesh". Good flow rate and even openings are the benefits of this mesh.

Dutch Twilled Weave



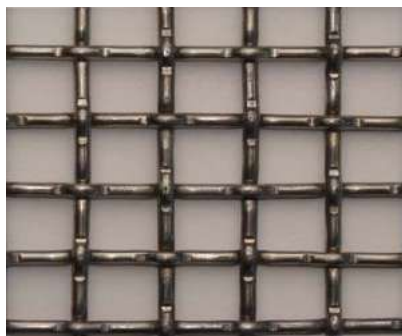
To this weave the weft wires are forced together during weaving. Compared to the plain Dutch weave this mesh has doubled the number weft wires, this provides a smooth surface for ultra-fine filtration applications.

Rectangular Mesh



The rectangular mesh is also called oblong/ broad. The most common metal ratio is 1:3, when reversed the mesh is known as broad mesh. This mesh is used for vibrating sieving screens or other architectural applications.

Crimped Screen



The wires in this mesh are crimped in both directions and combined to create a robust wire screen with a stable form and surface. It is suitable as protective screens for fences, gates and partitions for rack shelving systems.

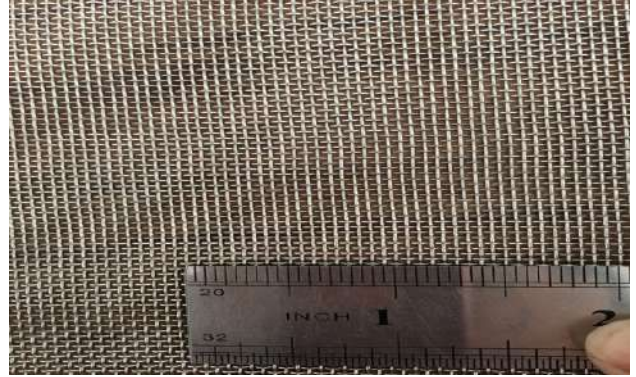
Welded Mesh/ Welded Screen



This mesh is similar to reinforced meshes. The horizontal wires (roll width) are secured by spot welding to the vertical wires (roll length). The screen has a high level of stability due to these constant connection points.

SS Woven Wire Mesh (Square)

- Rolls up to 30m in length and 1.53m (1530mm) in width are available in grades 304 and 316.
- Mesh can be cut a specific size as well.



PRODUCT CODE	APPROX. APERTURE		Mesh Per inch	WIRE DIAMETER		APPROX. OPEN AREA %	APPROX. WIRE GAUZE
	mm	Micron		mm	Inch		
SSWM01-10	22.4	22400	1 I/C	3.15	0.124	77%	10
SSWM0.75-12	16	16000	0.75 I/C	2.5	0.0984	75%	12
SSWM1.6-10	12.7	12700	1.6 I/C	3	0.118	65%	10
SSWM02-16	11.2	11200	2 I/C	1.6	0.063	77%	16
SSWM02-14	10.6	10600	2 I/C	2	0.078	70%	14
SSWM02-12	10	10000	2 I/C	2.5	0.105	63%	12
SSWM03-16	6.8	6800	3	1.6	0.063	67%	16
SSWM03-14	6.3	6300	3	2	0.08	57%	14
SSWM3.5-18	6.1	6100	3.5	1.2	0.047	69%	18
SSWM04-19	5.3	5300	4	1	0.0394	71%	19
SSWM04-18	5.1	5100	4	1.2	0.049	65%	18
SSWM04-16	4.7	4700	4	1.6	0.063	55%	16
SSWM05-18	3.9	3900	5	1.2	0.047	58%	18
SSWM05-16	3.5	3500	5	1.6	0.063	46%	16
SSWM06-20	3.3	3300	6	0.91	0.035	61%	20
SSWM06-18	3	3000	6	1.2	0.047	51%	18
SSWM06-16	2.7	2700	6	1.6	0.063	38%	16
SSWM08-26	2.72	2720	8	0.45	0.018	74%	26
SSWM08-22	2.5	2500	8	0.7	0.028	60%	22
SSWM08-20	2.3	2300	8	0.91	0.035	51%	20
SSWM08-18	2	2000	8	1.2	0.047	38%	18
SSWM09-20	1.9	1900	9	0.91	0.035	46%	20
SSWM10-26	2.1	2100	10	0.45	0.018	67%	26
SSWM10-24	2	2000	10	0.56	0.022	61%	24
SSWM10-23	1.9	1900	10	0.61	0.025	58%	23
SSWM10-22	1.82	1820	10	0.71	0.028	52%	22
SSWM10-21	1.74	1740	10	0.8	0.032	46%	21
SSWM10-20	1.6	1600	10	0.91	0.035	41%	20
SSWM10-25	1.6	1600	12	0.5	0.02	58%	25
SSWM12-22	1.4	1400	12	0.71	0.028	44%	22
SSWM12-20	1.2	1200	12	0.9	0.035	32%	20



SS Woven Wire Mesh (Square)

PRODUCT CODE	APPROX. APERTURE	APPROX. APERTURE	MESH PER INCH	WIRE DIAMETER		APPROX. OPEN AREA %	APPROX. WIRE GAUZE
	mm	micron		mm	Inch		
SSWM14-27	1.4	1414	14	0.4	0.015	61%	27
SSWM14-25	1.3	1300	14	0.5	0.02	52%	25
SSWM14-24	1.25	1250	14	0.56	0.022	48%	24
SSWM16-32	1.3075	1307.5	16	0.28	0.011	72%	32
SSWM16-28	1.2	1200	16	0.37	0.015	58%	28
SSWM16-26	1.1	1100	16	0.45	0.018	51%	26
SSWM16-24	1	1000	16	0.56	0.022	42%	24
SSWM16-22	0.9	900	16	0.71	0.028	31%	22
SSWM18-32	1.13	1130	18	0.28	0.011	63%	32
SSWM18-27	1.01	1010	18	0.4	0.015	51%	27
SSWM20-28	0.9	900	20	0.37	0.015	50%	28
SSWM20-26	0.81	810	20	0.45	0.018	41%	26
SSWM20-24	0.71	710	20	0.56	0.022	31%	24
SSWM24-30	0.745	745	24	0.31	0.0125	49%	30
SSWM24-26	0.6	600	24	0.45	0.018	32%	26
SSWM30-32	0.57	570	30	0.27	0.011	46%	32
SSWM30-30	0.53	530	30	0.31	0.0125	39%	30
SSWM40-34	0.415	415	40	0.22	0.009	40%	34
SSWM50-36.5	0.33	328	50	0.18	0.0071	41%	36.5
SSWM50-36	0.32	318	50	0.19	0.0075	39%	36.25
SSWM50-36	0.31	310	50	0.2	0.008	38%	36
SSWM60-37	0.26	260	60	0.16	0.0065	35%	37
SSWM70-38	0.21	210	70	0.15	0.0059	34%	38
SSWM80-39	0.19	190	80	0.12	0.005	34%	39
SSWM100-42	0.15	150	100	0.1	0.004	36%	42
SSWM120-44	0.13	130	120	0.08	0.0032	37%	44
SSWM140-45	0.11	110	140	0.071	0.0028	37%	45
SSWM150-45	0.1	100	150	0.063	0.0025	37%	45
SSWM180-47	0.09	90	180	0.05	0.002	42%	47
SSWM200-47	0.08	80	200	0.05	0.002	38%	47
SSWM250-48	0.063	63	250 TW&PL	0.04	0.0016	38%	48
SSWM300-49	0.056	56	300 PL	0.032	0.0013	40%	49
SSWM270-48	0.053	53	270 TW	0.04	0.0016	32%	48
SSWM325-49	0.045	45	325 TW	0.036	0.0015	31%	49
SSWM325-49	0.045	45	325 PL	0.032	0.0013	32%	49
SSWM350-49.5	0.04	40	350 TW	0.032	0.0013	31%	49.5
SSWM400-49	0.034	34	400 TW	0.03	0.0012	27%	49
SSWM500-50	0.025	25	500 TW	0.025	0.001	25%	50

1. Weaving pattern: (PL) Plain weave, (I/C) Inter crimped, TW (Twill weave)
2. The material type also comes in stainless steel 304 and 316
3. Most of the mesh available in standard width 1220mm and 1530mm width.
4. If the product is going to be used in a harsh environment or open space, we suggest that finished product is Pickled, Passivated and/or Electropolished. It should also be cleaned every month.



Welded Mesh - Rolls

- Available in rolls with standard width 1220mm
- Stainless Steel grades SS304 and SS316.
- Mesh can be cut a specific size as well.



PRODUCT CODE	MATERIAL GRADE	PITCH mm	WIRE DIA. mm	ROLL WIDTH mm	WEIGHT kg per m
WLD6.35-08	SS304 or 316	6.35	0.8	1220	1.5
WLD9.5-1	SS304 or 316	9.5	1.0	1220	1.5333
WLD9.5-0.8	SS304 or 316	9.5	0.8	1220	1.0
WLD11-0.8	SS304 or 316	11	0.8	1220	0.7667
WLD12.7-1.2	SS304 or 316	12.7	1.2	1220	1.7333
WLD12.7-1.6	SS304 or 316	12.7	1.6	1220	3.1
WLD12.7/25.4-1.2	SS304 or 316	12.7 X 25.4	1.2	1220	1.3
WLD19-1.6	SS304 or 316	19	1.6	1220	2.0333
WLD19-2	SS304 or 316	19	2.0	1220	3.2
WLD25.4-1	SS304 or 316	25.4	1.0	1220	0.6
WLD25.4-1.6	SS304 or 316	25.4	1.6	1220	1.5333
WLD25.4-2	SS304 or 316	25.4	2.0	1220	2.4
WLD38-2	SS304 or 316	38	2.0	1220	1.6333
WLD50-2	SS304 or 316	50.8	2.0	1220	1.2





Welded Mesh - Sheets

- Available in standard sheet size 1220mm x 2400mm
- Stainless Steel grades SS304 and SS316.
- Mesh can be cut a specific size as well.

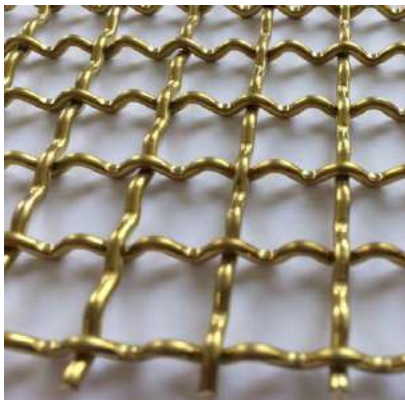


PRODUCT CODE	MATERIAL GRADE	PITCH mm	WIRE DIA. mm	SHEET SIZE mm x mm	WEIGHT kg
WLD25-2.5	SS304 or 316	25x25	2.5	1200X2400	9
WLD25-3	SS304 or 316	25x25	3.0	1200X2400	13
WLD25/50-3	SS304 or 316	25x50	3.0	1200X2400	9.5
WLD40-3	SS304 or 316	40X40	3.0	1200X2400	8
WLD50-3	SS304 or 316	50X50	3.0	1200X2400	6.5
WLD50-4	SS304 or 316	50X50	3.0	1200X2400	11.5
WLD50-5	SS304 or 316	50X50	3.0	1200X2400	18
WLD50/75-5	SS304 or 316	50X75	3.0	1200X2400	15
WLD100-3	SS304 or 316	100x100	3.0	1200X2400	3
WLD100-5	SS304 or 316	100x100	5.0	1200X2400	9
WLD100-6	SS304 or 316	100x100	6.0	1200X2400	13
WLD100-8	SS304 or 316	100x100	8.0	1200X2400	23
WLD150-6	SS304 or 316	150x150	6.0	1200X2400	8.5
WLD200-6	SS304 or 316	200x200	6.0	1200X2400	6.5





SOME OF OUR OTHER MESH PRODUCTS



BRASS WOVEN WIRE MESH



RECTANGULAR/ OBLONG MESH



KNITTED WIRE MESH



BOLTING CLOTH



BUSHFIRE MESH



HOLLANDER WEAVE MESH

Give us a CALL on **(03) 8714 9658** to know more



[@a1metalmeshscreens](#)

[@a1metalmeshscreens](#)

[@a1metalmesh](#)

9, Network Drive,
Truganina, VIC 3029

W: www.a1metalmeshscreens.com

E: info@a1metalmeshscreens.com